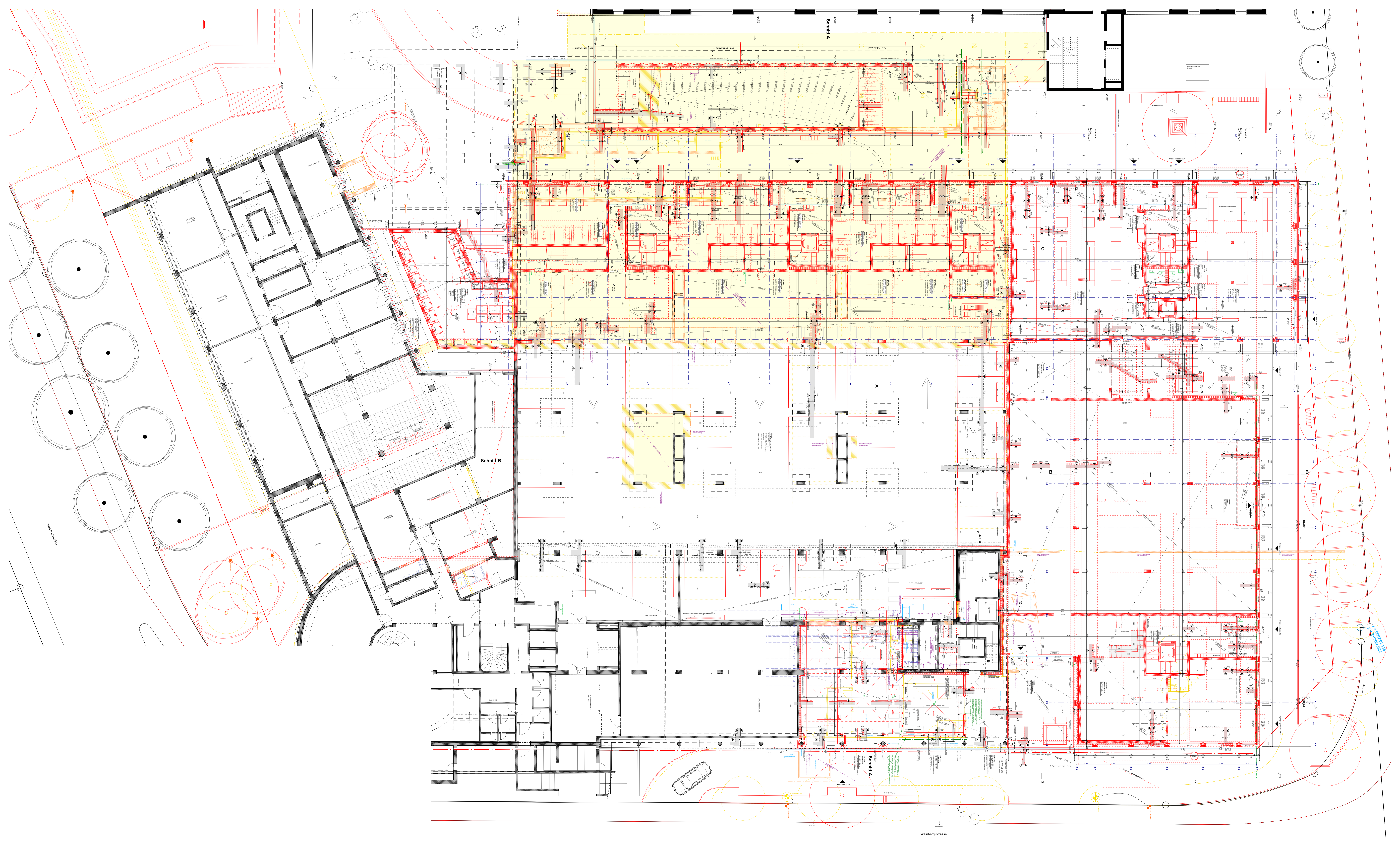
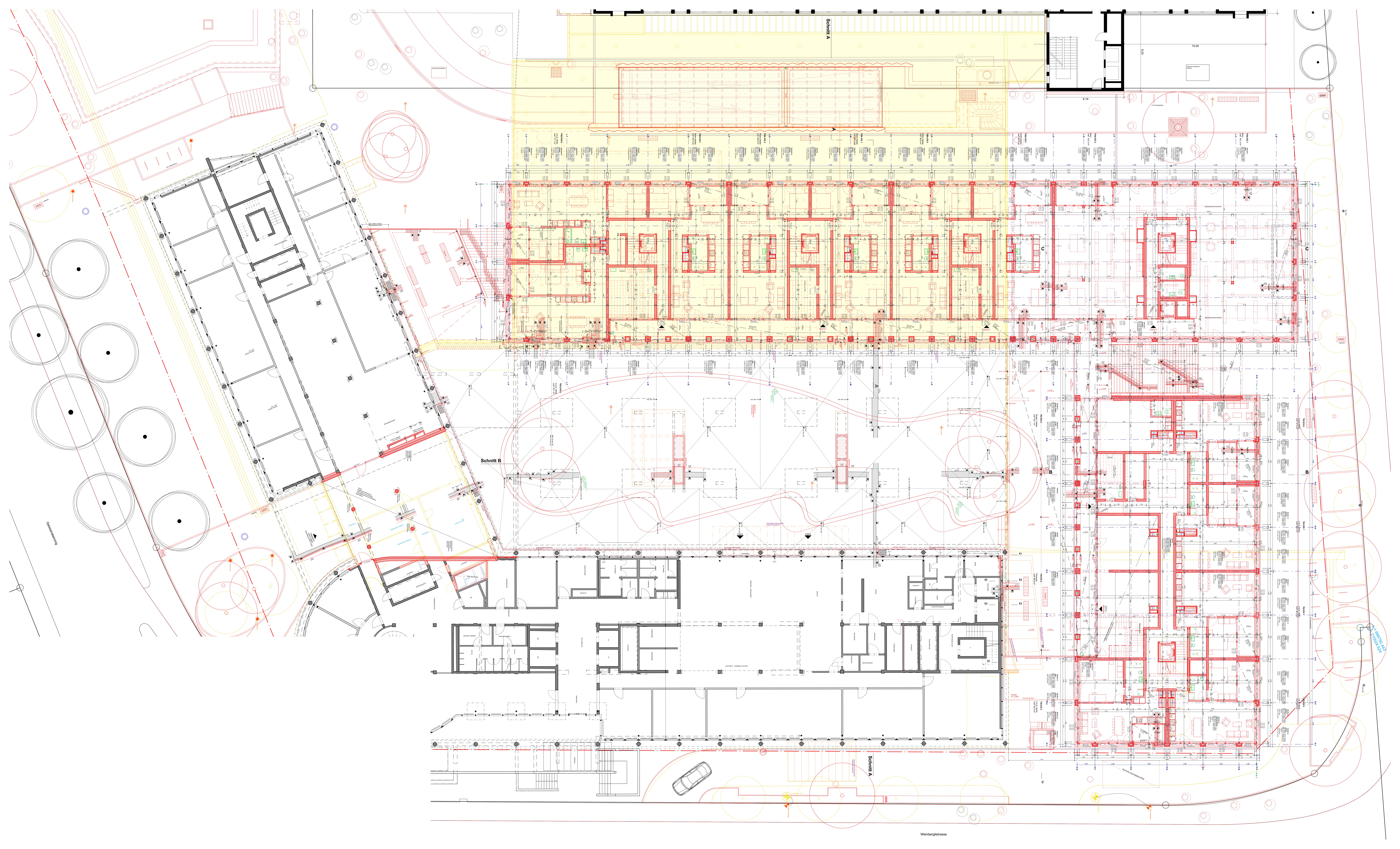
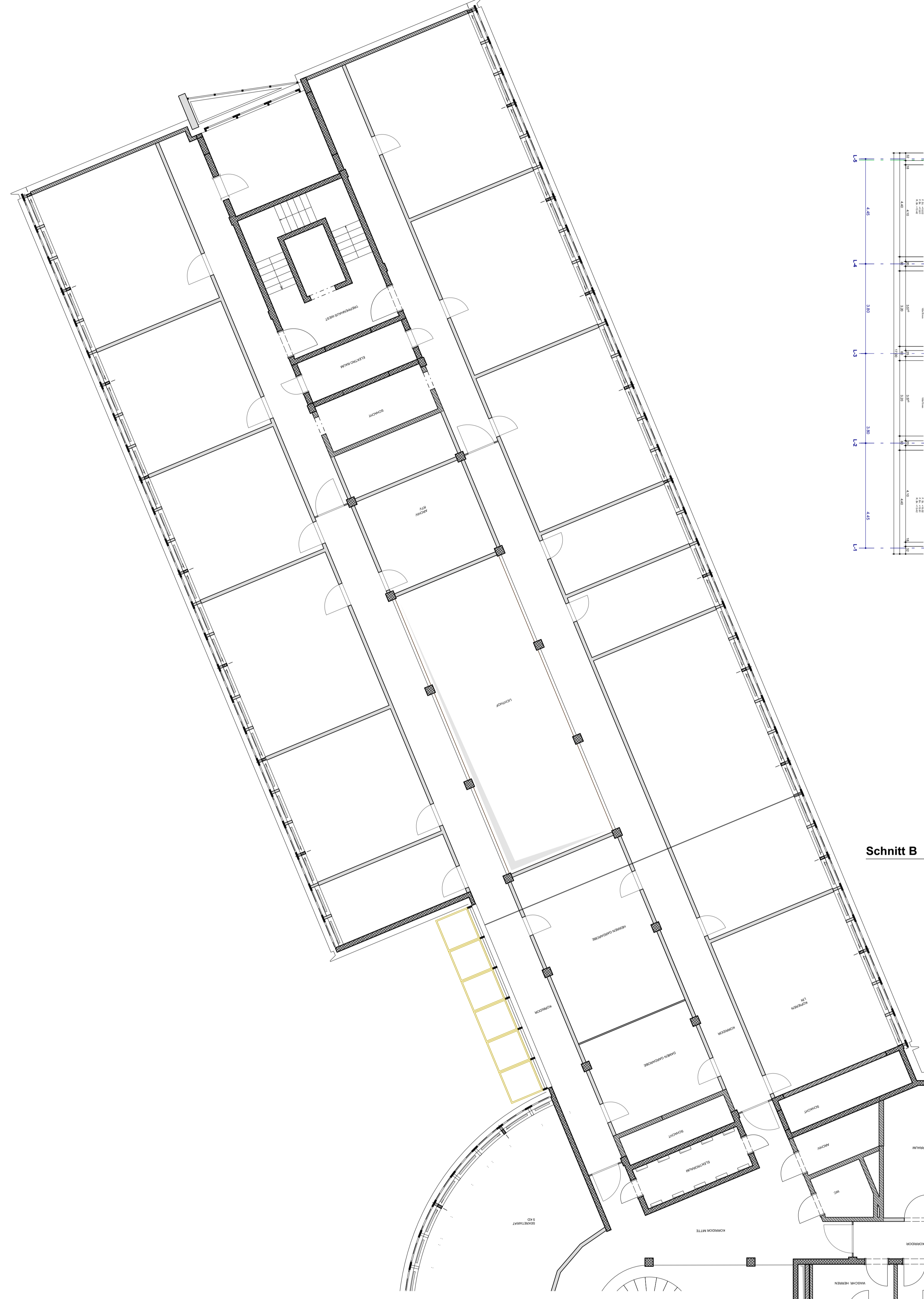


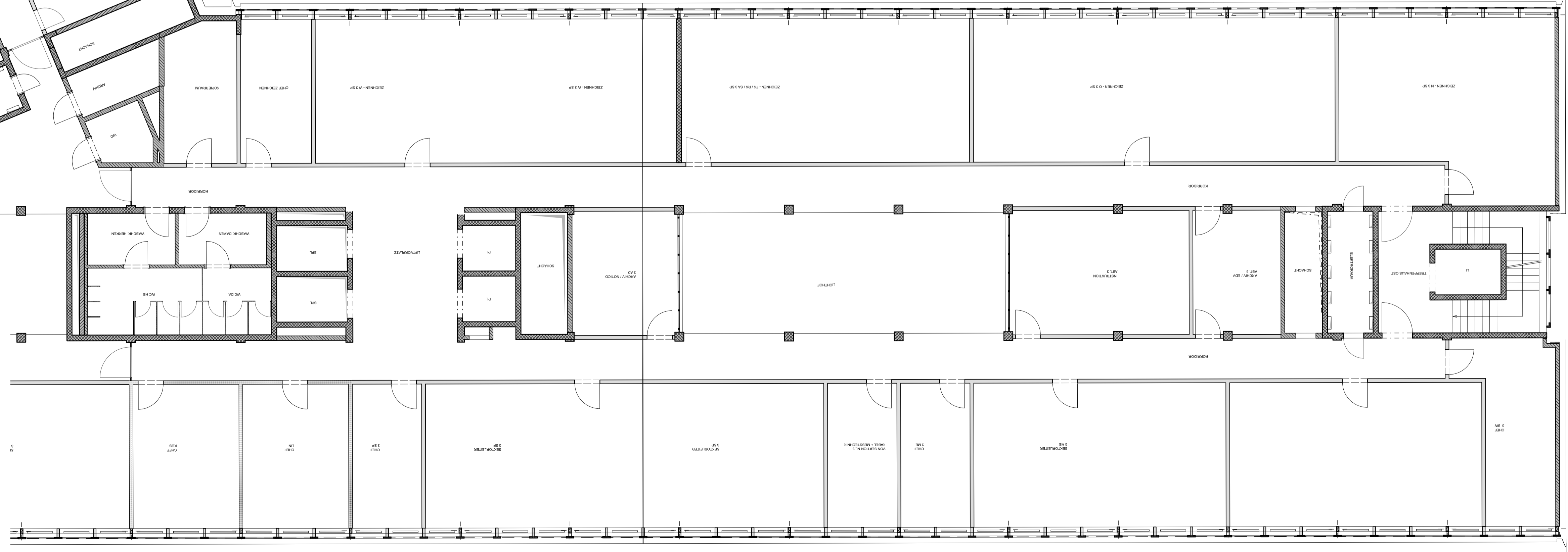
Y:\projekte\144
V:\projekte\144



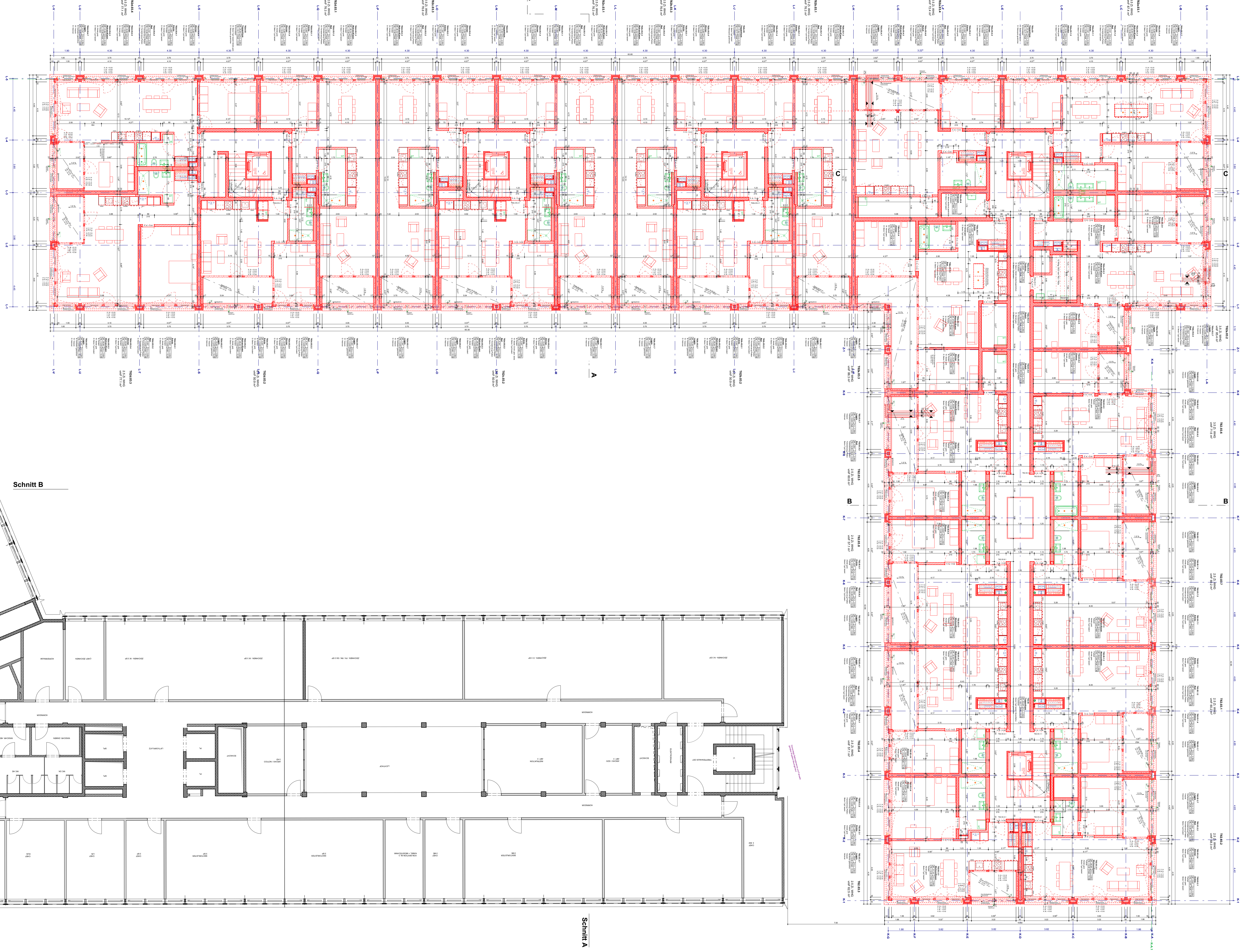




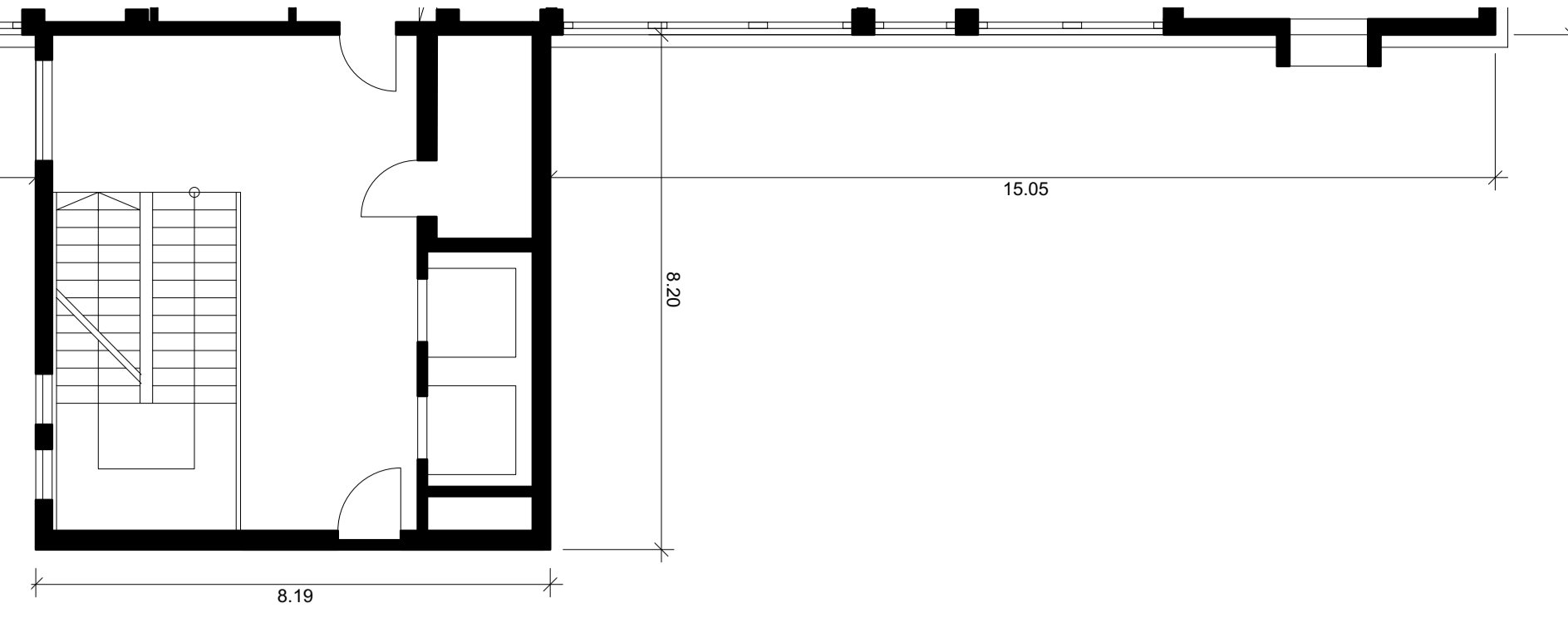
Schnitt B



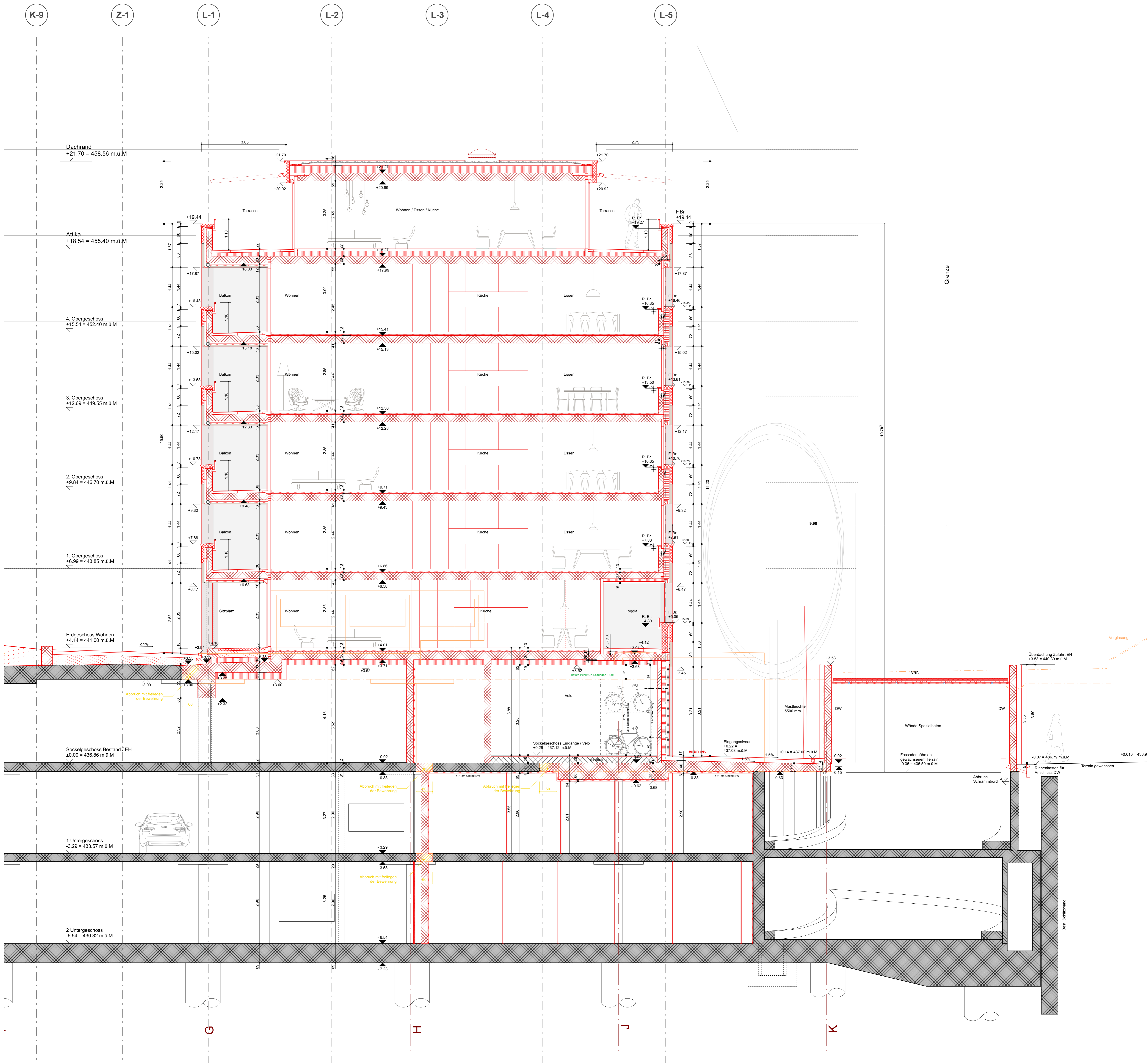
Schnitt A



Schnitt A



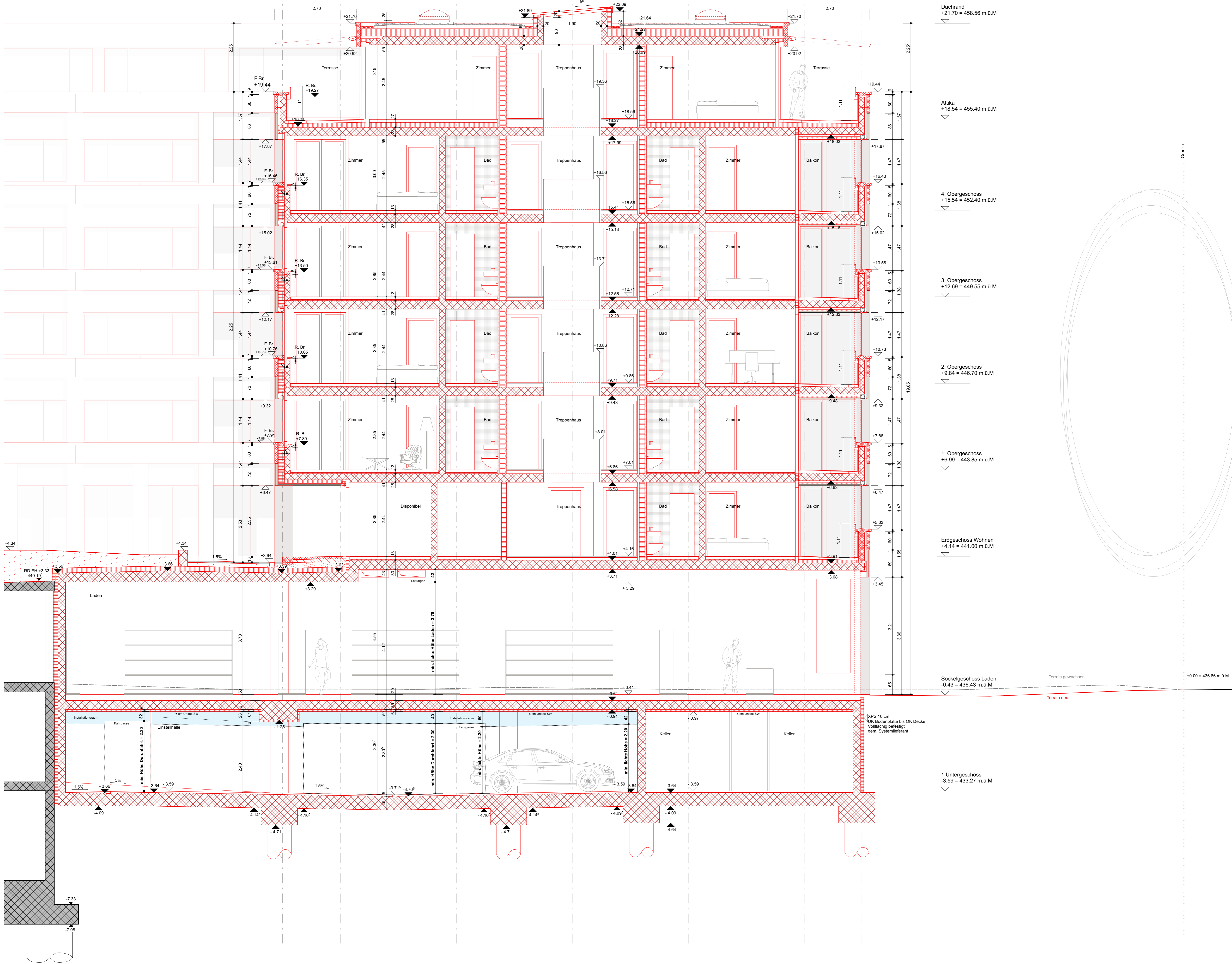
Neubau Winkelgebäude / Langhaus



Schnitt A-A

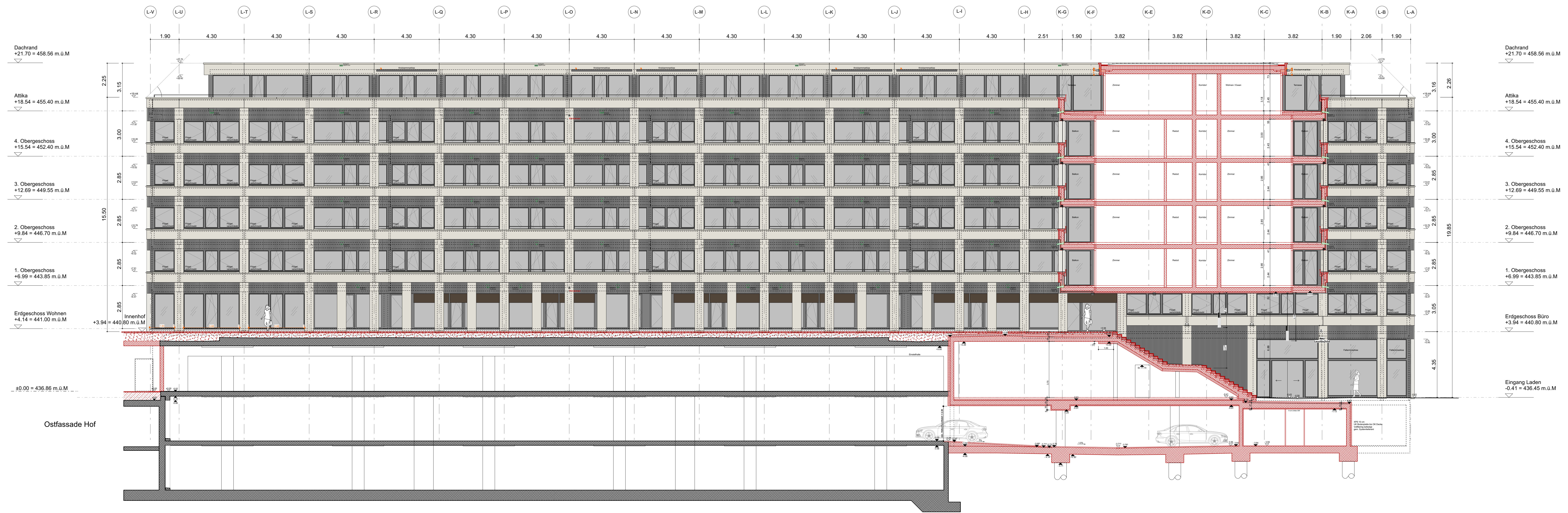
K-G K-F K-E K-D K-C K-B K-A

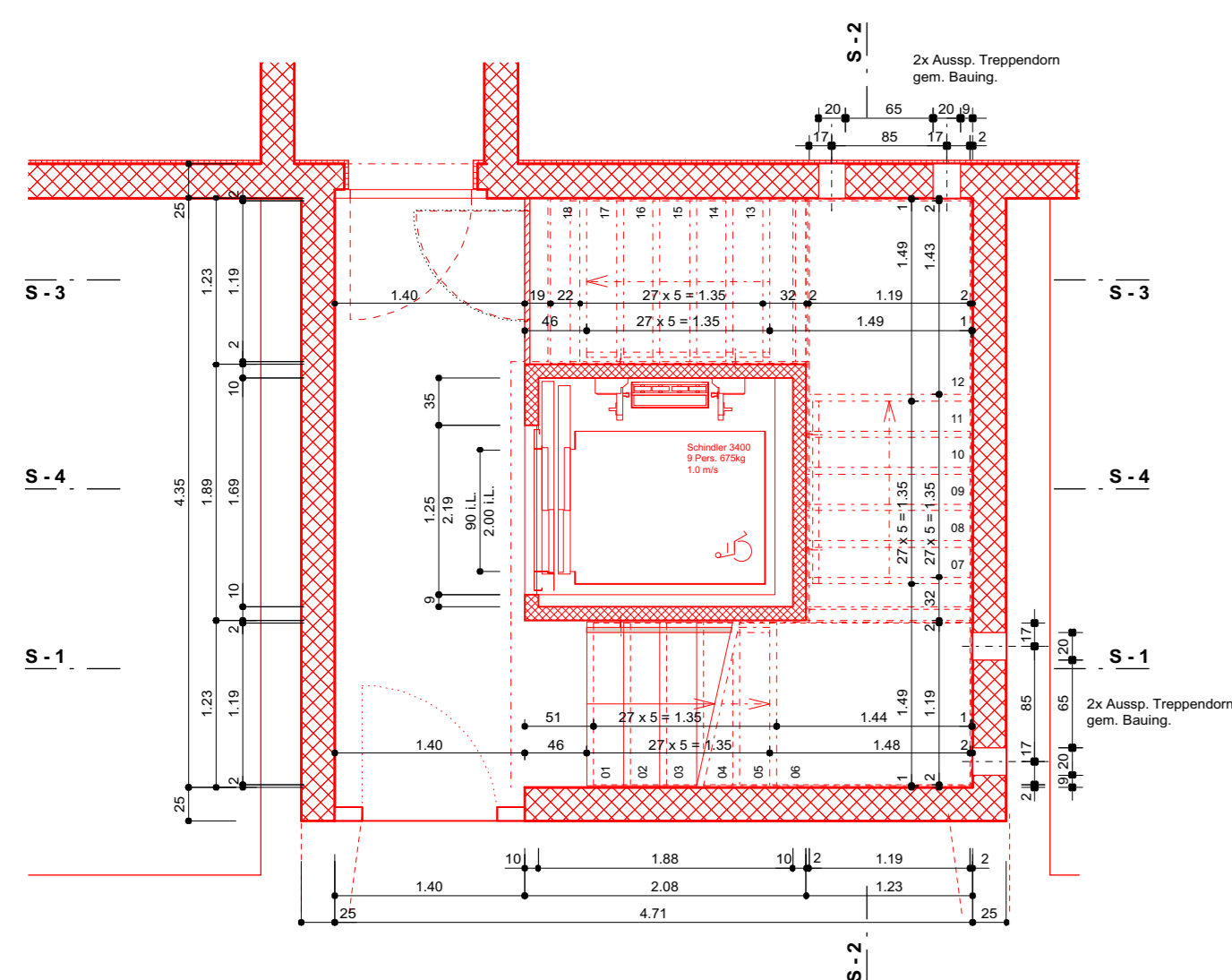
Neubau Winkelhaus:
Kopfhaus



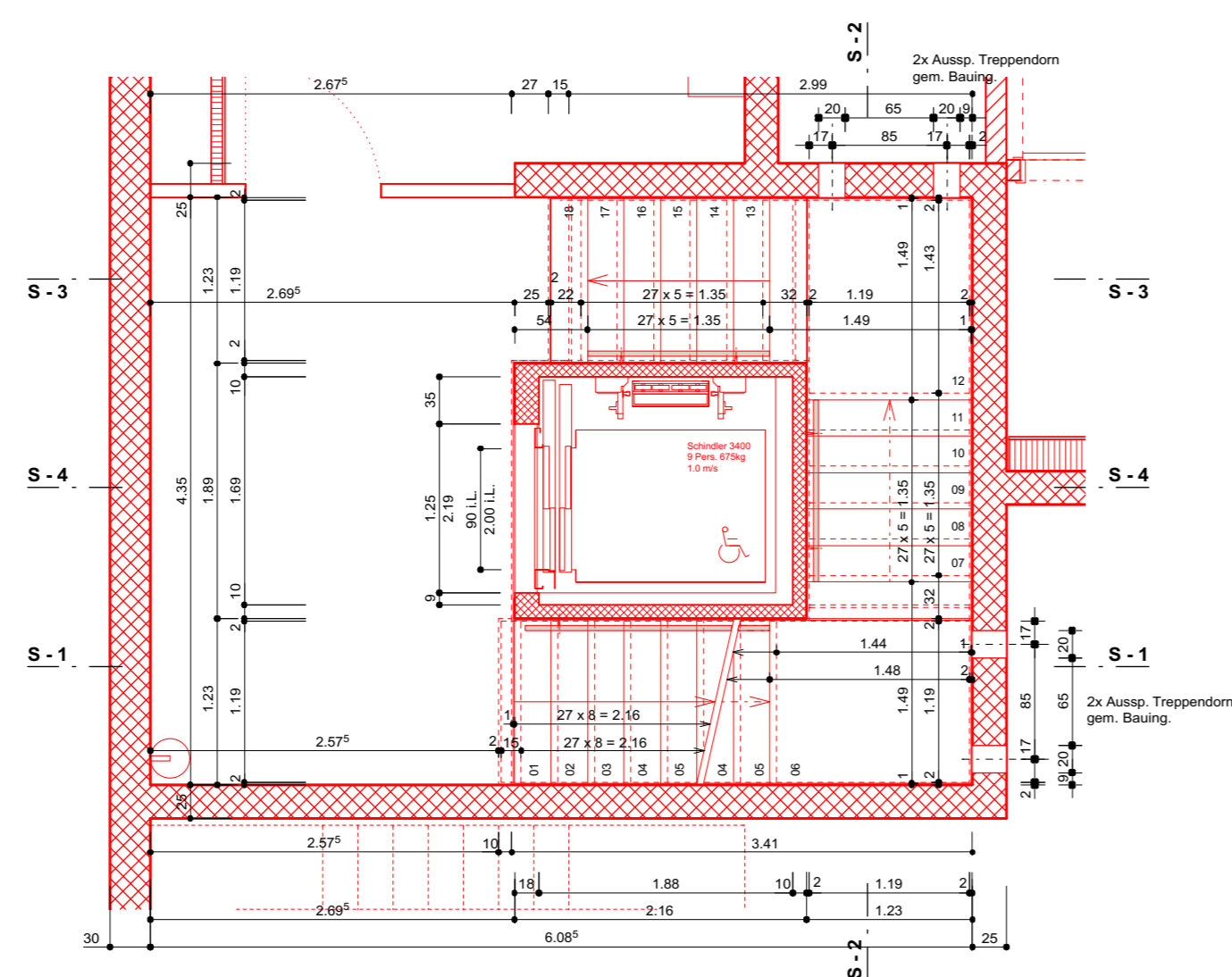
- Dachrand
+21.70 = 458.56 m.ü.M
- Attika
+18.54 = 455.40 m.ü.M
- 4. Obergeschoss
+15.54 = 452.40 m.ü.M
- 3. Obergeschoss
+12.69 = 449.55 m.ü.M
- 2. Obergeschoss
+9.84 = 446.70 m.ü.M
- 1. Obergeschoss
+6.99 = 443.85 m.ü.M
- Erdgeschoss Wohnen
+4.14 = 441.00 m.ü.M
- Sockelgeschoss Laden
-0.43 = 436.43 m.ü.M
- 1 Untergeschoss
-3.59 = 433.27 m.ü.M

Schnitt B-B

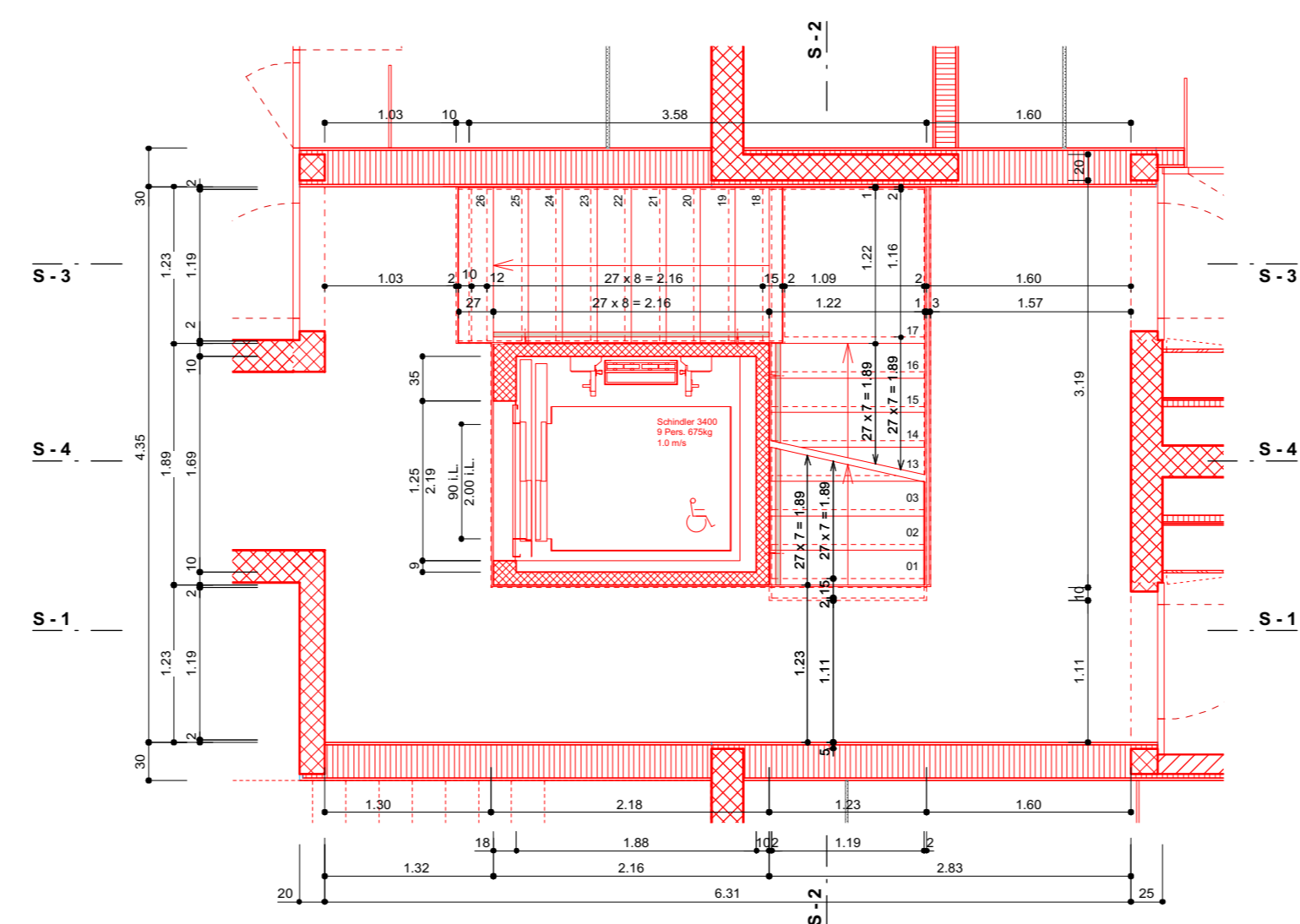




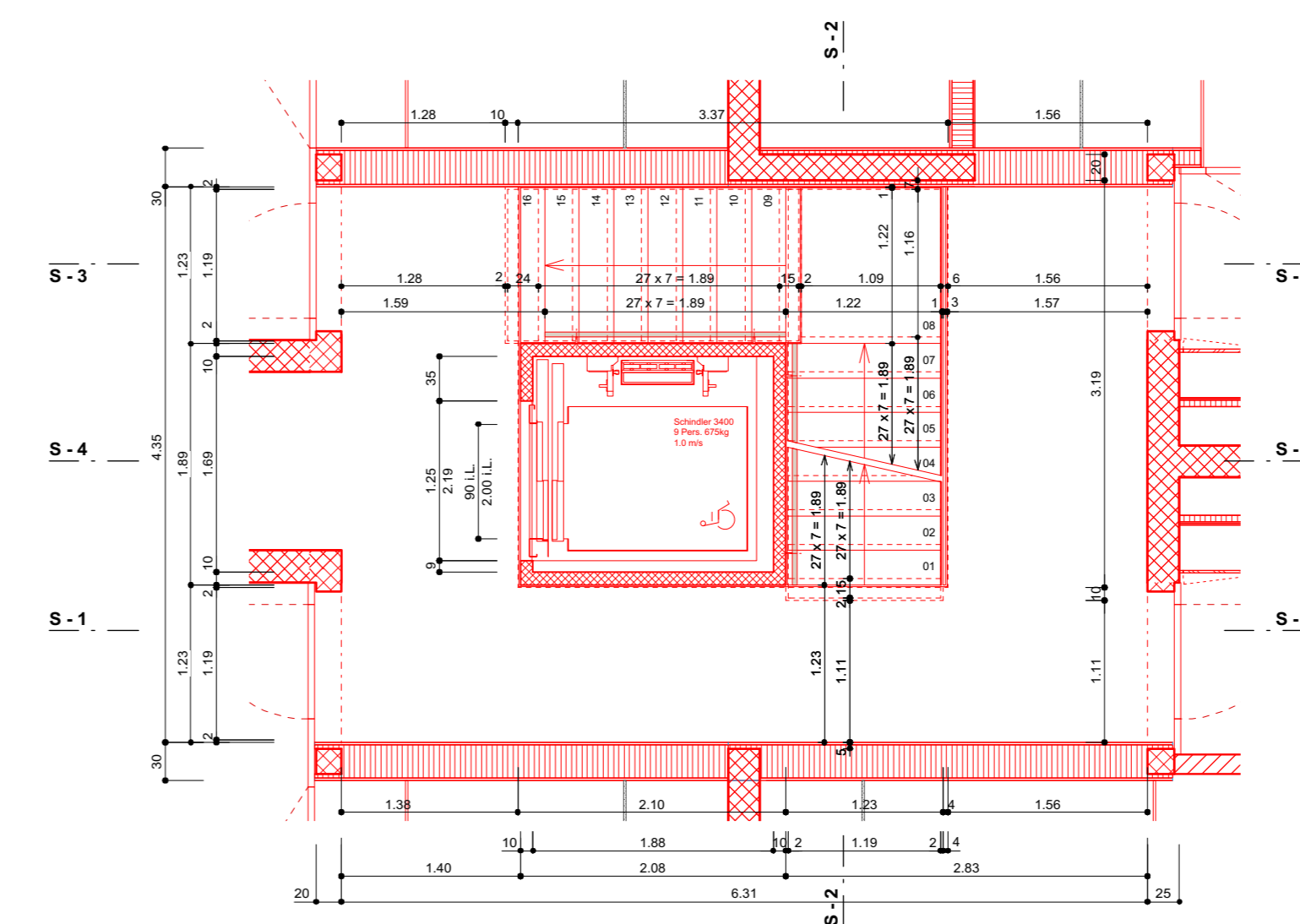
Grundriss Untergeschoss



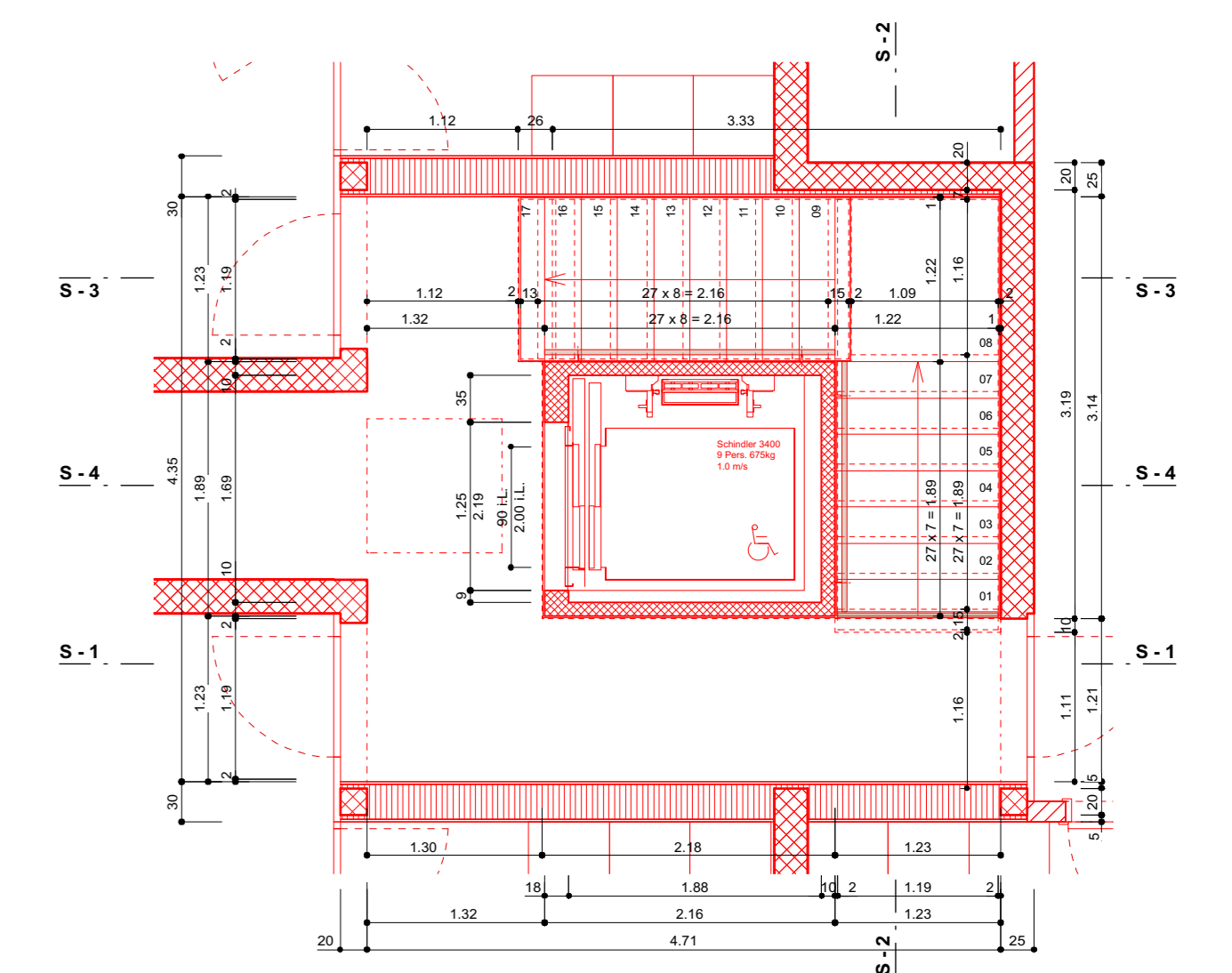
Grundriss Sockelgeschoss



Grundriss Erdgeschoss

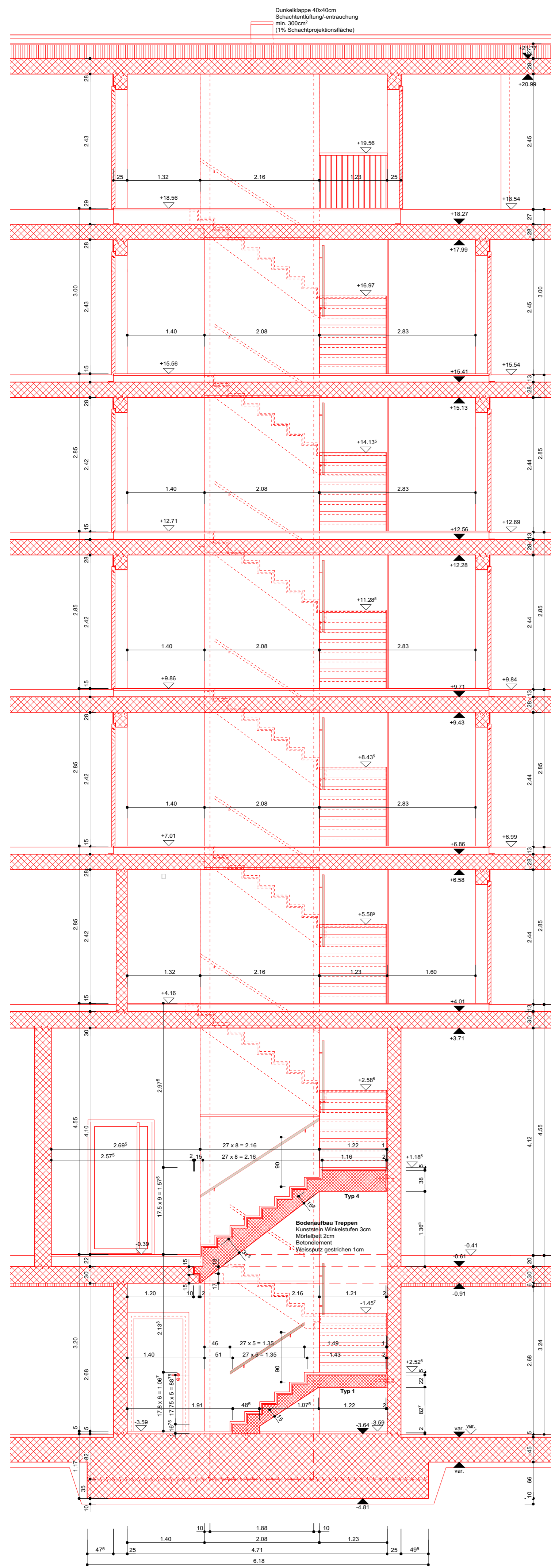


Grundriss Regelgeschoss



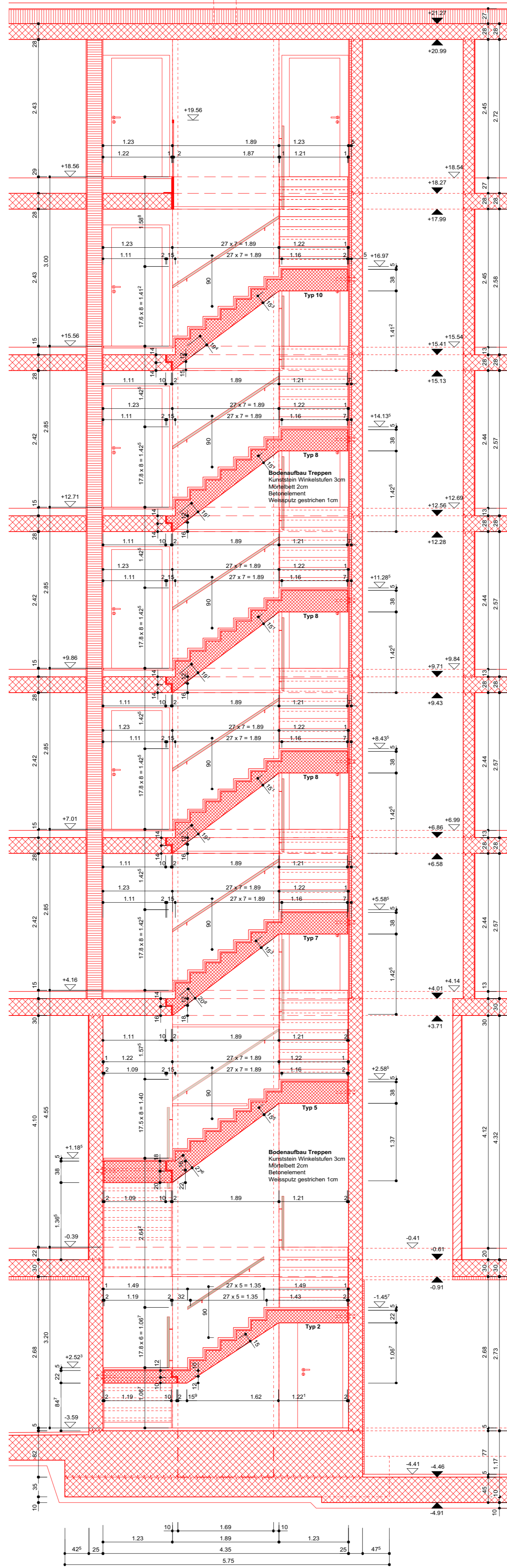
Grundriss Attikageschoss

Dachrand
+21.70 = 458.56 m.ü.M.



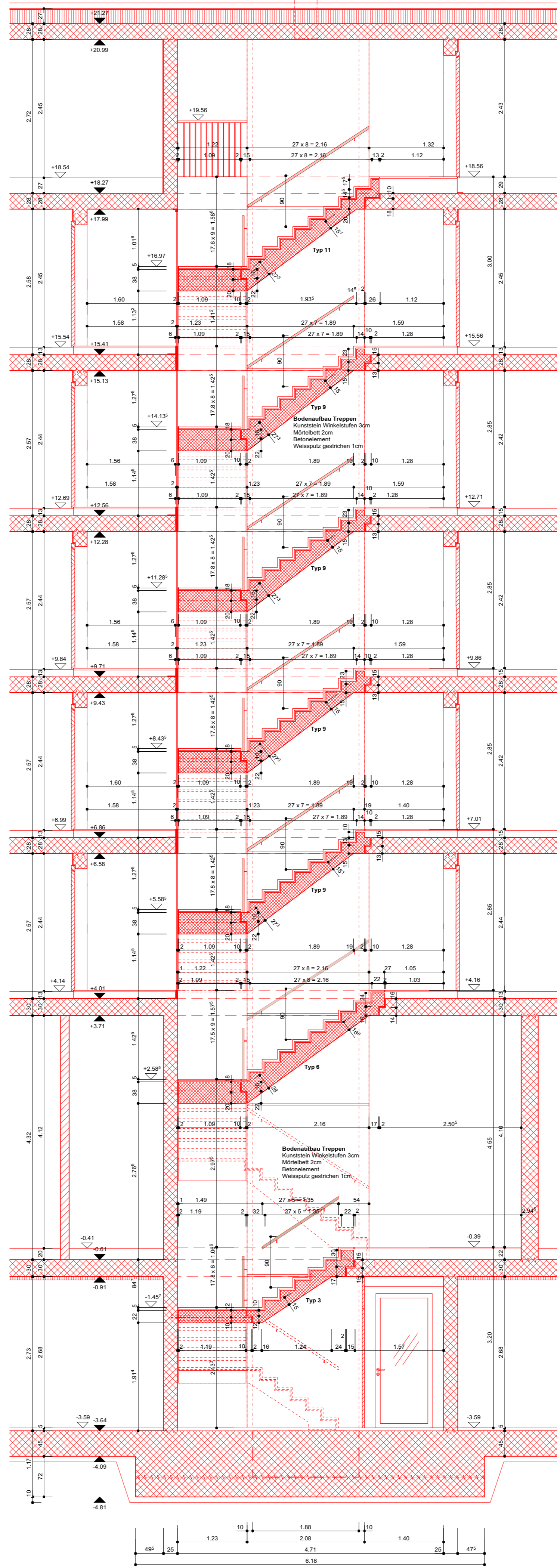
Schnitt - 1

Dachkappe 45x10cm
Eindeckelung/Verankerung
von 30cm
(1% Schräglage/Spandachblech)



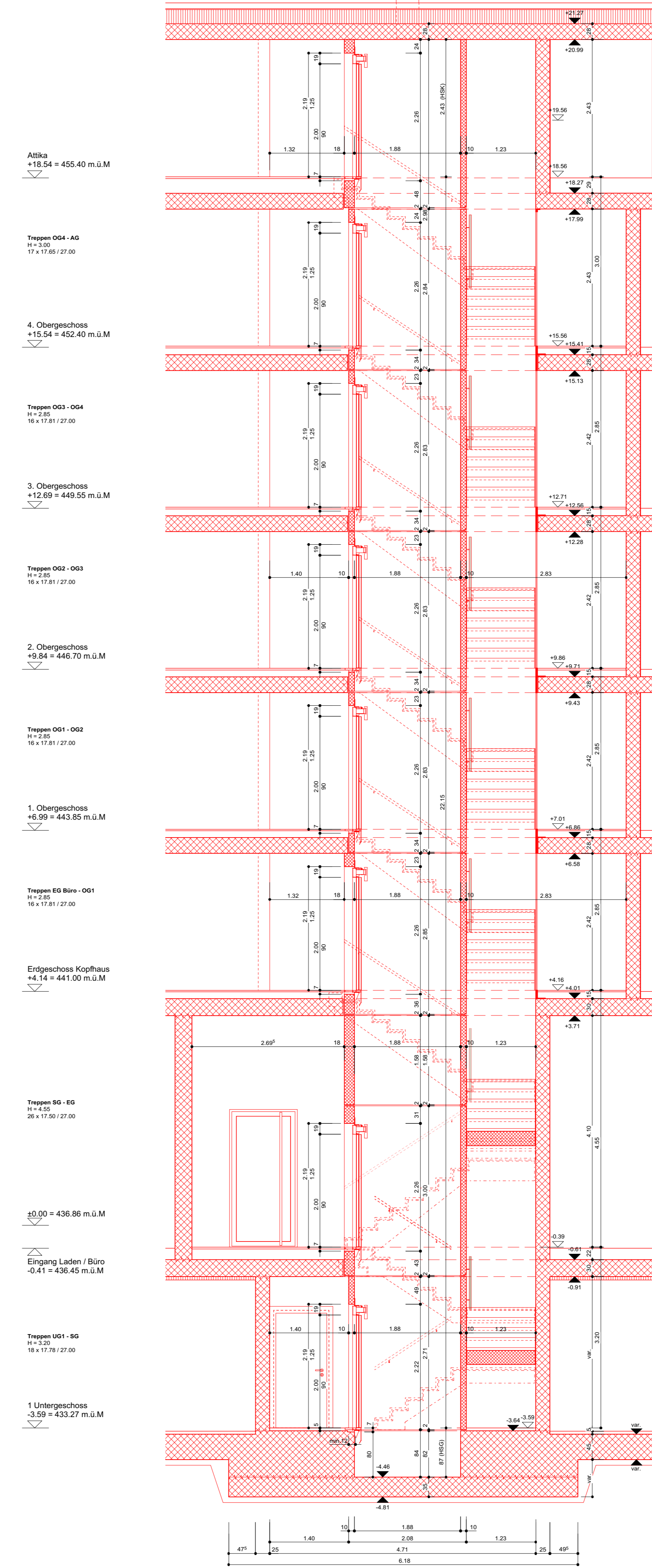
Schnitt - 2

Dachkappe 45x10cm
Eindeckelung/Verankerung
von 30cm
(1% Schräglage/Spandachblech)

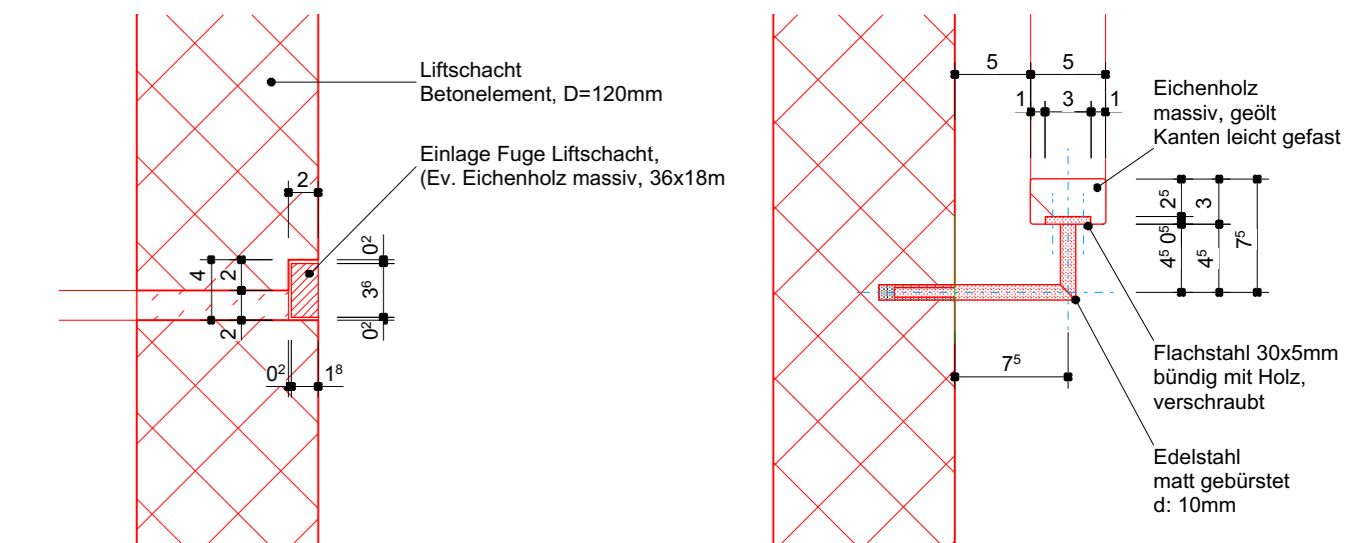


Schnitt - 3

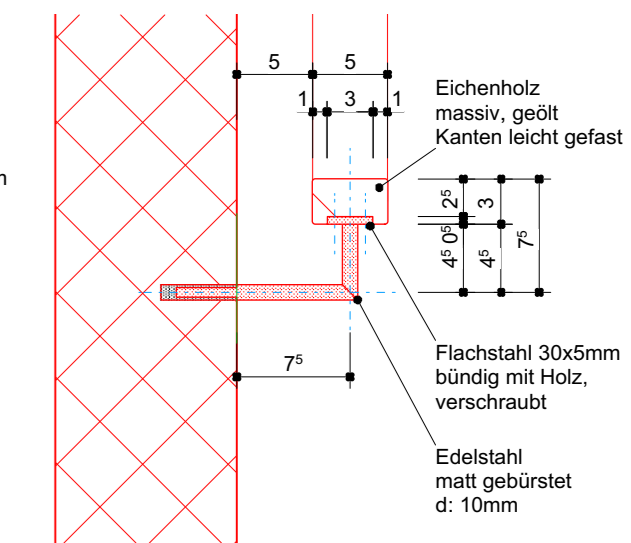
Dachrand
+21.70 = 458.56 m.ü.M.



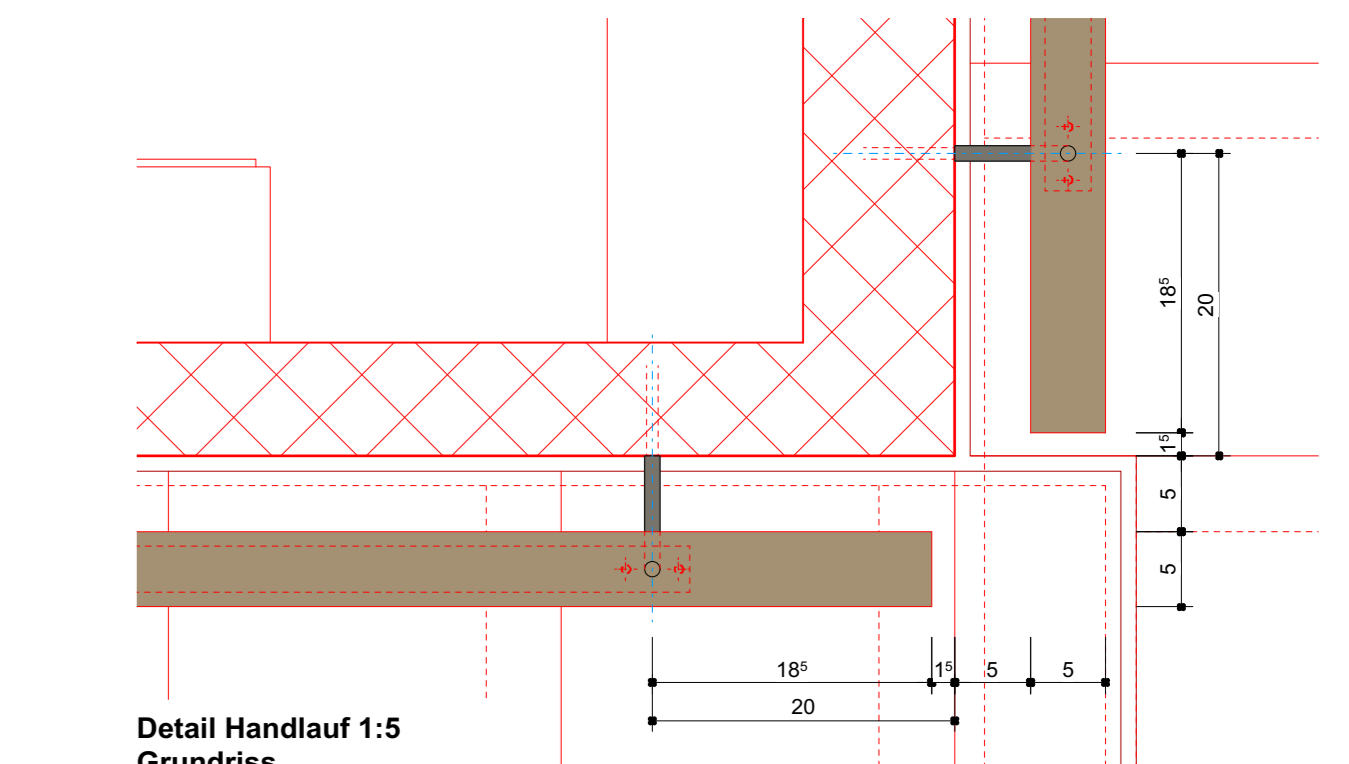
Schnitt - 4



Detail Lifschacht 1:5



Detail Handlauf 1:5 Schnitt



Detail Handlauf 1:5 Grundriss

Index	Datum	Von	Bis	Änderungen
	24.02.20	ca		Treppenelemente min. 15cm Stärke
	10.03.20	ca		Liftschächte mit 10cm Wandstärke (Masse L: 160x160cm)
A	21.04.20	ca		Index A - Update auf Plattform